

THE POLICYMAKER

COLLEGE of
PUBLICSERVICE
SAINT LOUIS UNIVERSITY

A Publication of the Department of Public Policy Studies

Volume 3, No. 1

Fall 2002

The Dean, Faculty, and Staff Garner Awards

Dr. James Gilsinan, the Dean of the College of Public Service and Professor of Public Policy Studies, has received two different service oriented awards in the past year, the Wendel Award and the In Touch with the Community Award. Gilsinan received the Wendel Award on May 1, 2002. This award goes to an individual "whose actions have proven to further the advancement of the City of St. Louis and Saint Louis University, embodying the ideal of the Jesuit call to be 'men and women for others.'" The Student Government Association accepts nominations from students and chooses one nominee who, after confirmation by the Senate, is presented with the award. Gilsinan was honored to receive the award, named after Dr. George Wendel, the Public Policy professor who initially hired him. According to Gilsinan, George Wendel was "one of the people who propelled the University into concern for the local community" and he was honored to be recognized in this way by the students. Past recipients of this award, established in 1999, include the late Dr. Wendel and Kathleen Brady.

Gilsinan received the In Touch with the Community Award on October 26 at Robert R. Hermann Stadium at the kickoff of SLU's annual Make a Difference Day. The award goes to a person who demonstrates a high level of commitment to serving the St. Louis community. Gilsinan has shown this commitment by volunteering with Habitat for Humanity, as well as serving on boards for numerous organizations. This award is part of the SLUstars program, through which university employees can nominate colleagues who they believe demonstrate exemplary service. Gilsinan is glad to see that the importance of community service has reached the corporate body of the university, as well as the student body. He is honored to have received these awards, but, ever selfless, Gilsinan appreciates that these awards also support and promote the goals of the College of Public Service.

Michael Johnson was given a SLUStar award at a breakfast on November 22nd at Bannister House. Recipients of these awards are nominated by SLU staff members for their contributions to the University. They are recognized for "instances in which they performed 'above and beyond' and demonstrated the Ignatian ideals of magi, a striving for excellence, and cura personalis--a personal concern and respect for others." Johnson's hard work as neighborhood programs coordinator, forming partnerships with other schools and agencies in the area, demonstrated his dedication to SLU and the St. Louis community.

Dr. Todd Swanstrom recently accepted the Michael Harrington award for his book *Place Matters*. This award from the American Political Science Association is given to "the book that best demonstrates how scholarship can be used in the struggle for a better world." This award was presented to him on August 31st in Boston.

Iris Hampton, the department's valued administrative assistant, won the Mason's Humanitarian of the Year Award for 2002 for her dedication to Breast Cancer Awareness. She was given this award at a ceremony on November 10th at the Lone Star Lodge. As a two-time survivor of breast cancer, Hampton is very dedicated to raising awareness about breast cancer and the help that is out there for those who are afflicted. Having met women with breast cancer who could not afford adequate health care, Hampton is committed to raising money that will support urban and rural clinics for low-income women. In addition to several local walks for the cause, she takes part every year in one long 65-mile walk, sponsored by Avon. This year's walk was in California and next year she is considering a walk that starts in Cincinnati. As far as receiving the Humanitarian Award, Hampton was "totally surprised." She did not expect all the attention she received for her efforts and believes she is just doing her part. "It's nothing extraordinary," said Hampton, "I simply walk." It is clear, however, that Iris's dedication and selflessness have earned her this award.

INSIDE

2000 Census Data Released

Joint Conference with Urban Land Institute

GIS Lab is Hub of Activity

MAPA Students Present Papers at Conferences

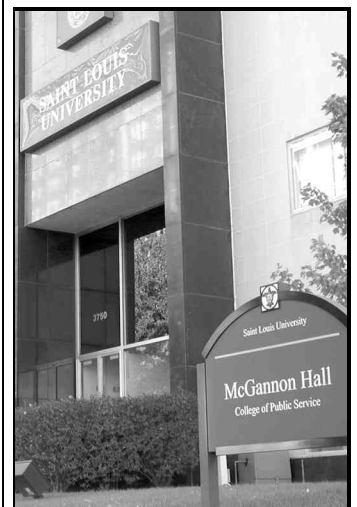
Students Study Abroad During Summer

Professor Earns Grants for Spatial Inequalities Research

Professor Delves in Multiple Projects on Urban and Economic Issues

Announcement of Scholarship Endowment

Information for Prospective Students



VISIT US ON THE WEB

<http://www.slu.edu/colleges/cops/pps>

Continued on page 5.

SAINT LOUIS
UNIVERSITY

The Census: Past, Current, and Future

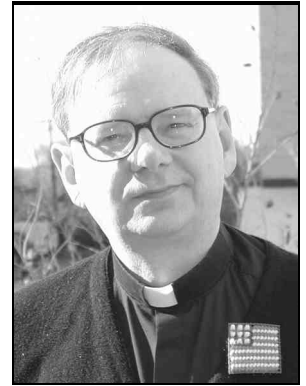
The release of the 2000 Census has been exciting for policy researchers and the Public Policy department has no shortage of those. *The Policymaker* sat down with **Father Robert Flack**, our resident census guru, to discuss some of the changes in the Census for 2000 and what the Census Bureau is looking to change in the future. One of the major changes for the 2000 Census was the change in racial categories. For the first time, people could select multiple racial backgrounds that better reflected their complex heritage. This may be most needed in an area with a complex racial makeup, such as New York or California, but racial background is becoming more complex everywhere.

Another change that the future holds for the census is more frequent surveying. *The American Community Survey* is a new approach to collecting census data and releasing it more frequently than the decennial census. The Census Bureau hopes that this survey will replace the long form in the 2010 Census. *The American Community Survey*, due to be fully implemented in 2003, will use computerized sampling to mail questionnaires every month to sample addresses. When a sufficient sample is collected for an area, the data will be released. The frequency of release will depend on the size of the area and the geographic level. Some types of data may be released every year while it may

take three to five years to collect a sufficient sample for tract level data.

Another way the census has changed in recent years is the availability and usability of the data. When the 1990 Census was released, no data was available on the Internet. Researchers had to look up census numbers in large printed volumes. Data became available over the Internet in around 1996, but even then it was not very user-friendly. The data is now very accessible and easy to use and, according to Father Flack, it will become even more so as time goes on. Possible improvements will be added flexibility in creating tables, improved mapping, and upgrading tiger files to make them easier to use in certain GIS applications, such as working with aerial photos.

Most of the 2000 Census data is now available; however some data will not be released until next year. Summary file 4, which is similar in concept to Summary file 2, will be released next year along with certain other specialized population and housing reports.



Father Robert Flack

Joint Conference with the Urban Land Institute

Last spring the Public Policy Department's Urban Planning and Real Estate Development Program and the Urban Land Institute together sponsored a conference called "Creative Redevelopment Partnerships: The Role of the Urban University." The conference took place here at SLU's Cook Hall on April 9-10 and included many speakers that are involved in urban development. The first day of the conference included a tour of the St. Louis area, highlighting the projects that have resulted from collaborative partnerships with universities. The second day consisted of panels of speakers who discussed the roles of area universities, lessons learned in other cities, and lessons learned from past initiatives. St. Louis University's President, **Father Lawrence Biondi**, and Washington University's Chancellor **Dr. Mark Wrighton** began the day with a keynote session to discuss the roles of these two universities in St. Louis redevelopment efforts, especially in the city's central corridor. Several faculty members from the Public Policy Department also contributed to the conference. **Dr. Mary Domahidy** spoke about SLU's role in the development of its surroundings in the 60s and 70s, through an enti-



Dr. Mark Wrighton, left, listens as Lawrence Biondi, S.J., answers a question.

ty called New Town St. Louis. **Dr. Scott Cummings** spoke about his experiences at the University of Louisville, and **Dr. Joyce Ann Pressley** mediated one of the afternoon sessions. In addition, key St. Louis developers and city officials addressed redevelopment issues in the City. The conference was well attended and participants responded positively to the quality of the information presented.

GIS Lab is a Hub of Activity

As always, the GIS Lab is a hub of activity as **Dr. Gary Higgs** and students are involved in several exciting projects. *The Crisis Intervention & Response Application (CIRA)* is about to advance to Phase II. This project uses digital photography and building blueprints to create a visual index for schools in St. Louis. Phase I of the project produced interactive floor plans and images for Beaumont and Soldan High Schools. Phase II will apply this technology to sixteen more schools in St. Louis. This application was designed for use of emergency workers who will be able to examine the layout of these schools and decide how to best act in a crisis.

Graduate student **Carey Bundy** is the project manager for *CIRA* and has taken what has been learned by past students to take the project to the next level. This summer they completed data acquisition of seven schools, which entailed taking digital pictures of every space within the schools. Bundy feels that the project will serve the community in several ways. "It will definitely be a benefit not only for the safety aspect, but we're actually documenting historical buildings... some of which were built in the early 1900s." In addition, it will help administrators know what's in their schools. Bundy feels that the project will have a lasting impact since the same technology can be used in the future to document other kinds of buildings.

In addition to assisting with local crises, Dr. Higgs is also working to use GIS technology for national security issues. He has been working in conjunction with NIMA (National Imagery and Mapping Agency) and the USGS (United States Geological Survey) Mid-Continent Mapping Center in Rolla to explore ways in which GIS and related technology can support homeland security. Dr. Higgs recently spoke at a conference at Fort Leonard Wood where GIS technology is to be used for training applications at the Army Maneuver Support Center.

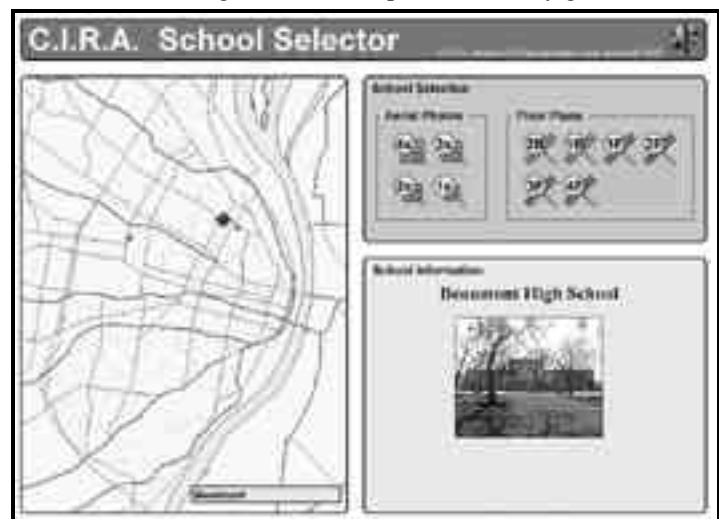
Another project that originated in the GIS Lab maps the instances of crime in St. Louis City. The design and technology for the *Safe City* website was developed by students in the Lab starting in May of 2001. This website, announced by **Mayor Francis Slay** at a news conference on October 23rd, enables citizens to see how many crimes have occurred around a certain address. Mayor Slay praised this website, saying, "no other city has established a crime-mapping web site as accessible and com-

prehensive as this one." This site is accessible through the St. Louis's Community Information Network website at: stlouis.missouri.org

The GIS Lab is also involved in projects that are not related to crime or security matters. The Missouri Botanical Garden has begun a project that uses GIS technology to map vegetation. Currently teachers from area schools are being trained to digitize and analyze trees and other vegetation at their schools. This will help them to educate their students about the environment and the role that vegetation plays. Other projects involve aerial photography and mapping in Florissant and data management and imaging for the Bi-State Development Agency. In general, there is no shortage of activity in the GIS Lab and Dr. Higgs and students are working hard to accomplish their many goals.



Students surveying a school



A screen shot of the CIRA application



Dr. James Gilsinan and Dr. Gary Higgs received thank you from Mayor Francis Slay

Information for Prospective Students

Every fall semester, the Department of Public Policy Studies hosts an information session so prospective students can see for themselves what we have to offer. For more information, or to make a reservation, contact:

Mary Wendel
(314) 977-3923
wendelm3@slu.edu

Or visit us online at:

<http://www.slu.edu/colleges/cops/pps>

Students Present Papers about Public Administration, Power Coalitions at Conferences

Three students in the Masters of Arts in Public Administration program brought their ideas to the floor. **Scott Krummenacher** presented a paper on June 1, 2002 in Cleveland, Ohio at the Public Administration Theory Network Conference. The paper discussed the influence that philosophers Jurgen Habermas and Richard Rorty have had on public administration, particularly in the postmodern era. These two philosophers support pragmatic approaches and are both somewhat skeptical of the rationality of modernism. They differ, however, in their opinions about the application of metaphysical transcendence. Habermas supports the idea of universal truths and Rorty instead focuses on useful knowledge. The paper stated that the ideas of these philosophers can help administrators "create new tools, attitudes and theories to assist them in coping with current contingencies" and their notions "can shape a new way of writing and conceptualizing the field."

Michael Schmid and **Craig Fitzpatrick** presented a paper at a conference for the American Society for Public Administration (ASPA) in Columbia, South Carolina during the first week of October. The paper focused on how major public assets, such as airports, transit lines, stadiums, and sewer lines, are developed in

cities across America. The formation of coalitions to oppose these projects depends on the existence of leaders who can organize and mobilize the affected populace. Neighborhoods may have differing abilities to resist projects that they find threatening, depending on socio-economic class and the strength of elected officials in the area. Also a weak, fragmented governmental structure and lack of regional planning goals will prevent officials from seeing the long term regional impact and enable large projects to be pushed through any weak oppositional factions. In the case of the Lambert Airport expansion in St. Louis, there is no coalition to speak of and no clear leader from among the fragmented governments surrounding the airport. In general, by examining governance, communications, and cooperation between entities, the paper discusses how major regional assets are developed and implemented.

Schmid and Fitzpatrick were happy with the way their paper was received at the conference, fielding many questions from an interested audience. They may send it to journals in the spring. Schmid gives credit to **Dr. Todd Swanstrom** for his help in forming the topic. He praises Swanstrom and other professors who help students craft interesting ideas, which, in turn, benefit the student and the discipline.

Students Study Abroad in the Summer

Time off from the regular academic year didn't stop these students from gaining great insight abroad. **Carrie Menendez**, a student in the public administration program, spent last summer in Nairobi, Kenya taking a course in cross-cultural community development. **Dr. Dwight Jackson**, a former student in public policy, taught the course at HOPE Africa University. The course consisted of going out into the community, in teams of Africans and Americans, and conducting qualitative research by interviewing individuals in the communities. Menendez conducted her research in Kibera, the second largest slum in the world. The Kibera community consists of 1 to 1.4 million people who live in a 2 square mile area of government owned land. The purpose of the research was to create a working definition of community development as defined by the community. Menendez has high praise for this program. "The cross-cultural learning experience is the richest education I have ever received. It is a highly intense and interactive course and I would recommend this experience to anyone." This program will be offered next summer as an advanced qualitative methods course.

Michael Schmid had the opportunity to study policy analysis in Europe over the summer. Sponsored by New York University, this program included two weeks at the Ecole National des

Travaux Publics de l'Etat in Lyon, France and then a week of seminars in Brussels, Belgium on policy analysis in the European Union. In Lyon, **Dr. Dennis Smith** of NYU directed students in a series of intensive seminars, which included distinguished European and American guest speakers who discussed several policy areas, including health care, public safety, immigration, urbanization, social development, energy management, and monetary policy, among others. In Brussels, most students spend their time at the EU, but the program offers flexibility depending on students' interests. For example, Michael spent much of his time at NATO with Ambassador **Nick Burns**. There he sat in on talks and met with delegates from Latvia.

Schmid said the program was "fantastic" and would recommend it highly. He said the seminars were intensive and full of practical information that he can use later in his career. The program included students from six countries on three different continents from different policy disciplines. Schmid was the only student from SLU this summer, but he did so well that Dr. Smith would like to have more SLU policy students next summer. For more information about the program, students can contact Professor Dennis Smith at 212-998-7425 or check out the NYU website at www.nyu.edu/summer/courses/abroad/wagner.nyu

Announcing a New Scholarship Endowment

The **Donald P. Sprengel Endowed Scholarship** has been established in recognition of the first director of the doctoral program in Public Policy Analysis and Administration. Dr. Sprengel was a member of the faculty from 1969 to 1996. The new Scholarship will be awarded to a new graduate assistant in the doctoral program.

Dr. Swanstrom Earns Grants for Spatial Inequalities Research

In order to expand upon the research that he and partners did for their book, *Place Matters*, **Dr. Todd Swanstrom** received two grants for conducting research on spatial inequalities. The first grant, from the Saint Louis University Graduate School, supports a project to use GIS technology to map economic data from the U.S. Census for the St. Louis metropolitan area between 1970 and 2000. The goal is to examine economic trends in our region, as well as to develop a general index of spatial inequality that can be applied to any metropolitan area. Some of these maps have been shown to Metropolitan Congregations United (MCU), providing spatial information on trauma centers and certain aspects of public schools, such as expenditures per student and students on free lunch programs. Graduate students **Gwen Allen** and **Alan Lamberg** had

assisted with this project. Allen believes that mapping is a good tool to illustrate a point. She said that this information could be used by organizations like MCU that are concerned with policy issues, enabling them to better assess the region. It supports the case of why we need regional governance.

A second grant from the Brookings Institution seeks to discover trends in spatial inequality for the 50 largest metropolitan areas. The study will use census data from 1980 to 2000 to examine whether poor areas are becoming poorer and rich areas are becoming richer. The research hopes to find out if there is a vicious cycle of inequality that requires the intervention of policymakers. This study is being conducted by Dr. Swanstrom and **Father Robert Flack**, with the assistance of graduate students **Colleen Casey** and **Sara Whittington**. Most of the research

has been in data collection, with analysis initiated mid-semester. According to Casey, the hardest part has been working with the data since it is collected a little differently in each census year. Also, the sheer amount of data collected is somewhat daunting since it includes all the population and income data for the largest 50 metropolitan areas for three separate censuses. Casey said that part of the challenge, too, is that some of these areas have grown, which can dilute the impact of the data. Another challenge involves the change in geography over time. Despite these challenges, Casey and Whittington both believe that this is a worthwhile project, which will show economic disparities and isolation in these cities. The goal of this research team is to collect and analyze the data in order to produce a report for the Brookings Institution in the spring.

Awards

Continued from page 1.

Dr. Robert Cropf has a new wall decoration. A plaque to the left of his desk says, "Graduate Student Association Mentors Award presented to Robert A Cropf, PhD., 16 May 2002." This award is given every year to a faculty member who "best exemplifies the Jesuit mission and spirit of St. Louis University." A committee of the GSA reviews the nominations and chooses the candidate who most successfully fits the criteria for the award. Cropf was surprised and pleased to be considered for the award, which is presented every year at the pre-commencement in May in front of faculty and graduate students for the entire university. Cropf was proud to receive this recognition before such a distinguished group. According to Cropf, faculty all hope that they are making a difference for their students and it is nice to have proof that he has reached his students. This award "confirms that I'm making an impact," Cropf said proudly. "Whenever I look at it, I will always treasure it."

Dr. Cummings Involved in Several Research Projects

Dr. Scott Cummings is conducting research and writing book chapters and articles on several different subjects. The Annie E. Casey Foundation has invested \$30 million to improve workforce development policies across the nation. As a part of this project the Foundation is supporting publication of a book about jobs initiatives in St. Louis, New Orleans, Philadelphia, Denver, Milwaukee, and Seattle. Dr. Cummings is writing the chapter about job training and workforce development policies in St. Louis.

He is also writing two chapters about economic restructuring and race for a book about St. Louis. One chapter will explain how regional economic restructuring is related to racial and income disparities in the St. Louis region. The second chapter will focus on African American businesses in the region, including discussions about how locating in poor central-city neighborhoods versus suburban areas affects these businesses.

Dr. Cummings has also been working on needs assessments for the elderly and families and children at risk. Part of the research involves the creation of a database to identify neighborhoods with the greatest accumulations of social capital. He and **Dr. Charles Marske** are partnering on this project and intend to write articles based on their research.

A fourth and final project is part of an initiative of the Great Cities Institute. For this project, Dr. Cummings is writing a chapter for a book that discusses the role of universities as real estate developers in St. Louis, Indianapolis, and Louisville. Dr. Cummings is definitely keeping himself busy and making our department proud.



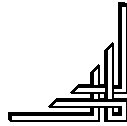
Dr. Scott Cummings



2002-2003 Graduate Assistants



Gwen Allen
 Carey Bundy
 Will Haynes
 Alan Lamberg
 Larry Luscri, II
 Carrie Menendez
 Michael Schmid
 Jen Sieve
 Andrea Sukanek
 Sara Whittington



Next Issue:

Alumni News
 More GIS
 Faculty Activities
 Improvements to the Website
 An interview with a Ph.D. Student

Public Policy Studies Alumni: How has your experience at SLU contributed to your career?

Fill out this form, attach a note if you like, and include a nonreturnable photo, if possible. Mail to:

Department Chair
 Public Policy Studies
 Saint Louis University
 3750 Lindell Blvd.
 St. Louis, MO 63108-3342

Or, contact us online at:

<http://www.slu.edu/colleges/cops/pps>

Name _____

Name at graduation, if now changed _____

Degree(s)-BA, MAPA, MAUA, MAUPRD, JD/MAPA, JD/MAUA, PhD /
 Year(s) graduated _____

Home address _____

Home telephone _____

e-mail address (will be published) _____

Employer _____

Title or position _____

Business address _____

Business telephone _____

Other (List responsibilities, special projects or interests) _____

THE POLICYMAKER

SAINT LOUIS UNIVERSITY
 Department of Public Policy Studies
 3750 Lindell Blvd.
 St. Louis, MO 63108-3342
 Phone: (314) 977-3934
 Fax: (314) 977-1616